



Global Traffic
Technologies

Opticom™ Central Management Software

Opticom™ Infrared System Matched Component Products

January 2009

Description

Opticom™ Central Management Software is a server-based software program that allows traffic engineers to remotely manage and maintain Opticom Infrared System intersections by mapping equipment usage and ownership into their organizational framework.

Key entities involved:

Region: A metropolitan area that represents the scope of any one Opticom Central Management installation.

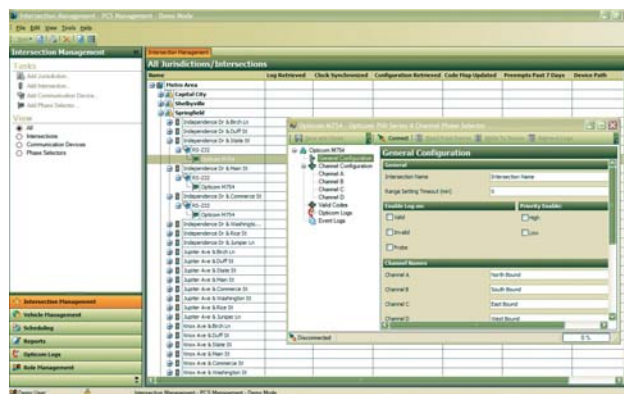
Jurisdiction: A governmental unit or organization that controls intersections or agencies or both.

Agency: A governmental unit or organization that controls vehicles.

Communicating directly with Opticom Infrared Model 700 Series Phase Selectors at intersections, the software downloads authorized emitter codes and retrieves call history logs, allowing users to:

- Manage intersections, vehicles, communications and security
- Maintain Opticom phase selector configuration
- Update Opticom infrared system security (code maps) in the phase selectors
- Retrieve logs from phase selectors and query logs on an ad-hoc basis
- Analyze data and generate reports from logs
- Schedule log collection and report generation
- Troubleshoot and maintain the Opticom infrared system
- Respond to complaints efficiently

Manage Intersections

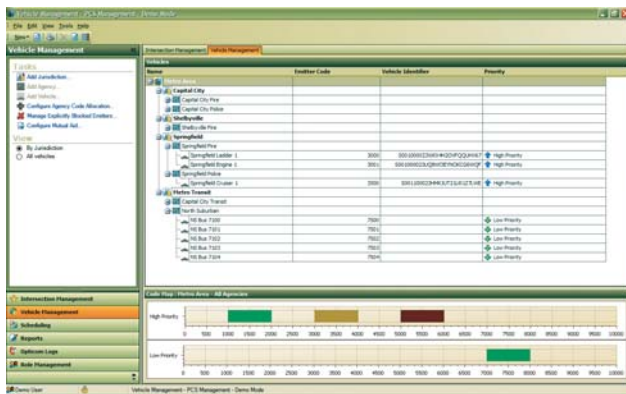


Configure jurisdictions, intersections, communication devices and phase selectors with the Intersection Management tool

The Intersection Management tool allows users to define jurisdictions within regions, identify intersections and configure communication devices and phase selectors. Once this information is entered in the Opticom Central Management Software database, agencies can:

- Find out how the Opticom infrared system is being used and by whom
- Check activity within the last few minutes, over the past several months, or even over the course of several years
- Review the programmed parameters of each phase selector and reconfigure them to new settings, if desired
- Manage the phase selector inventory and generate inventory listing

Manage Vehicles

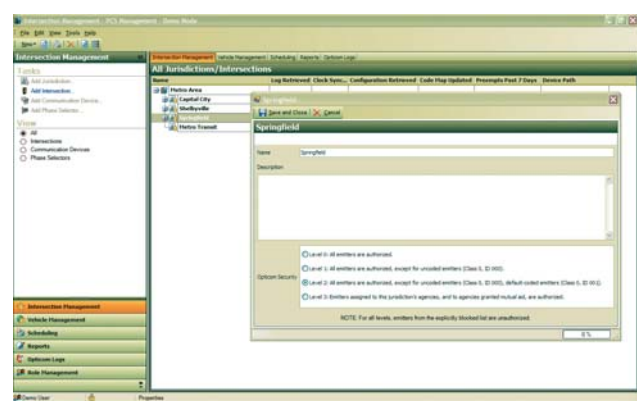


Create and manage a local or regional emitter code plan with Vehicle Management tools

Opticom™ Central Management Software allows users to create and manage a local or regional emitter code plan by jurisdiction and by each agency within the jurisdiction, so they can:

- Maintain a vehicle database that includes information about each vehicle in every agency and jurisdiction
- Differentiate between vehicles using emergency vehicle preemption and transit signal priority
- Correlate the name of every vehicle making a preemption or priority call with its owning agency and vehicle descriptors
- Accommodate one-way or reciprocal Mutual Aid agreements between jurisdictions
- Establish and maintain an unauthorized emitter database

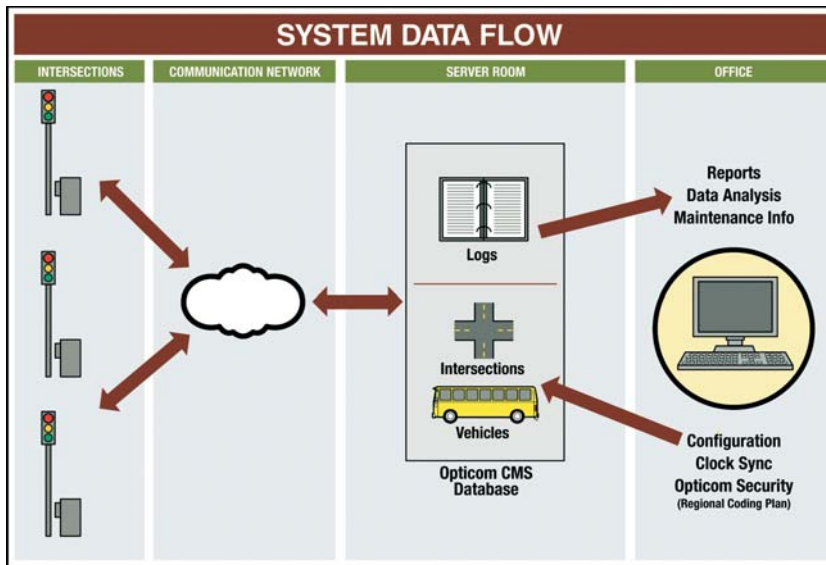
Manage Security



Configure security at jurisdiction level

Implementing, changing and managing a regional or jurisdictional security plan is greatly simplified with Opticom Central Management Software. Users can:

- Configure each jurisdiction in a region with a level of security appropriate for that jurisdiction—different jurisdictions within the region can even deploy different security levels
- Provide multiple levels of security:
 - Level 0:** All emitters, coded and uncoded, are authorized
 - Level 1:** Blocks uncoded emitters
 - Level 2:** Blocks uncoded emitters and default-coded emitters; all others are authorized
 - Level 3:** Blocks all emitters except those with values from a predetermined range
- Easily evolve from a lower level of security to a higher level of security
- Monitor usage patterns, detect system abusers, and find out whether and where vehicles have attempted to break into the system
- Explicitly block certain emitter codes, such as codes that appear in the intersection log reports but cannot be identified, or emitters that have been reported as missing or stolen or that are associated with registered vehicles that must be taken off the authorized use list



Log data from intersections equipped with the Opticom™ Infrared System is collected by the Opticom Central Management Software Database through the existing communications network. Opticom Central Management Software allows traffic engineers to transform the raw log data into valuable reports and perform a variety of maintenance and management tasks.

Server Recommendations

A locally supported and dedicated server hosts the database, services and user interface.

Supported Operating Systems

- Windows® 2003 Server SP2
- Windows® XP Professional SP3

Hardware Requirements

- 2 GHz or greater processor (dual- or quad-core Intel® Xeon® is recommended)
- 2—8GB memory
- 20—100GB storage in RAID configuration
- Tape or external storage for database backup
- NICs/comm ports per communications solution

Note: Opticom Central Management Software should be deployed on a dedicated server.

Database Requirements

- SQL Server 2005: Use either customer-purchased product edition or SQL Server Express that is included on the Opticom Central Management Software installation media
- SQL Server Express is limited to 4GB database size, sufficient for initial deployment

Workstation Recommendations

The workstation hosts the user interface and allows you to work remotely from the Opticom Central Management Software server.

Supported Operating Systems

- Windows 2003 Server SP2
- Windows XP Professional SP3

Hardware Requirements

- 2 GHz or greater processor
- 2GB memory
- 20GB storage

For more information about Opticom™ Central Management Software, see your Global Traffic Technologies systems consultant. For general information, call 1-800-258-4610 or visit www.gtt.com.



Global Traffic Technologies

Global Traffic Technologies, LLC
7800 Third Street North
St. Paul, Minnesota 55128-5441
1-800-258-4610
651-789-7333
www.gtt.com



ISO 9001: 2000
FM 535303

Global Traffic Technologies Canada, Inc.
157 Adelaide Street West
Suite 448
Toronto, ON M5H 4E7
Canada
1-800-258-4610

Opticom is a trademark of Global Traffic Technologies, LLC.

Used under license in Canada.

Windows is a registered trademark of Microsoft Corporation in the United States and other countries.

Intel and Xeon are trademarks of Intel Corporation in the U.S. and other countries.

Please recycle. Printed in U.S.A.

© Global Traffic Technologies, LLC 2008

All rights reserved.

79-1000-0268-0 A